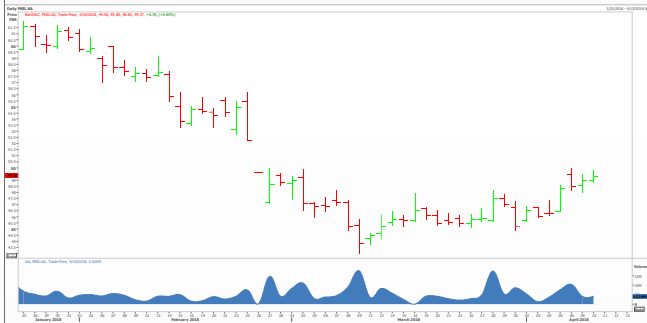
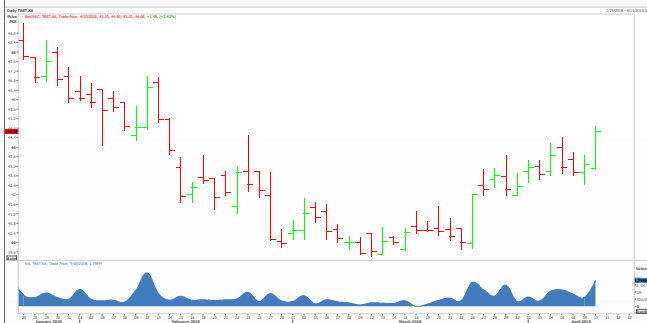


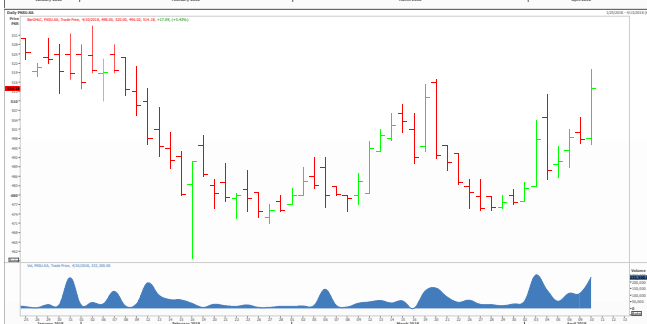
ATRL: Trading at Rs275.7, price action suggest potential upside to Rs282. Place stoploss below Rs270



PAEL: Trading at Rs49.37, price action suggest potential upside to Rs52. Place stoploss below Rs48.5



TREET: Trading at Rs44.68, price action suggest potential upside to Rs46. Place stoploss below Rs43.27



PSMC: Trading at Rs514.18, price action suggest potential upside to Rs533. Place stoploss below Rs504

Volume Leaders				
Ticker	Price	Change	Change %	Volume
LOTCEM	11.13	+0.2	+2.0%	18,023,000
EPCL	38.90	+0.2	+0.6%	15,488,000
TRG	36.84	-0.1	-0.4%	9,402,500
NRSL	13.55	+0.1	+0.4%	9,379,500
FFL	40.57	+1.1	+2.8%	9,345,500
AGL	7.37	+0.4	+5.1%	8,400,500
ANL	16.34	+0.2	+1.2%	6,728,500
DFML	43.61	+0.5	+1.2%	6,603,000
WTL	2.33	+0.1	+2.2%	5,939,500
POWER	10.11	-0.2	-1.6%	5,434,000

Gainers				
Ticker	Price	Change	Change %	Volume
NESTLE	12,980	+121.0	+0.9%	140
EXIDE	434.18	+20.7	+5.0%	109,900
ATBA	427.71	+20.4	+5.0%	22,700
SITC	368.59	+17.6	+5.0%	49,100
PSMC	514.18	+16.3	+3.3%	233,300
MARI	1,529.00	+12.0	+0.8%	2,740
ATRL	275.70	+10.7	+4.0%	1,354,300
SRVI	868.99	+9.0	+1.1%	350
DLL	179.95	+8.6	+5.0%	4,500

Losers				
Ticker	Price	Change	Change %	Volume
SCL	324.26	-8.5	-2.6%	200
GSKCH	497.94	-10.5	-2.1%	31,600
MACTER	233.51	-11.5	-4.7%	200
SAPL	1,325.60	-12.4	-0.9%	380
OTSU	267.00	-13.0	-4.6%	500
KHTC	682.82	-14.8	-2.1%	1,820
ICI	865.00	-15.0	-1.7%	4,650
PAKT	1,900.00	-25.0	-1.3%	180
COLG	2,946.01	-154.0	-5.0%	80

Disclaimer

Disclaimer: This document is prepared for information purposes only. The information and data on which this report is based are obtained from sources which we believe to be reliable but we do not guarantee that it is accurate or complete. This document does not take account of the investment and trading objectives, financial situation and particular needs of clients, who should seek further professional advice or rely upon their own judgment and acumen before making any investment / trading decision.

Analyst Certification

The author (s) of this report hereby certifies(y) that this report accurately reflects his/their own independent opinions and views as of the time this report went into publication and that no part of his/their compensation was, is or will be affected by the recommendation(s) in this report. The research analyst or any of his/their close relatives do not have a financial interest in the securities of the subject company aggregating more than 1% of the value of the company and the research analyst or their close relatives have neither served as a director/officer in the past 3 years nor received any compensation from the subject company in the past 12 months. The Research analyst or his/their close relatives have not traded in the subject security in the past 7 days and will not trade for 5 days post publication of the report.

REP-091



Contact us:
Email: research@abbasisecurities.com
Website: www.abbasisecurities.com
Telephone: 111-555-275

